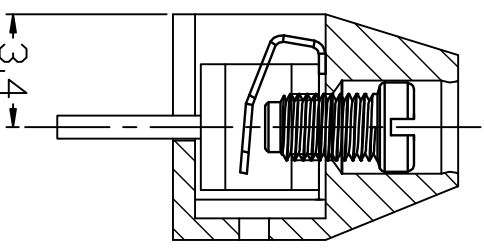
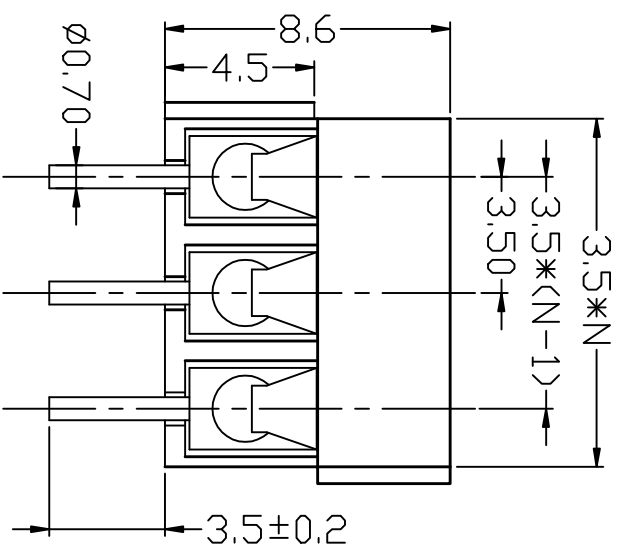
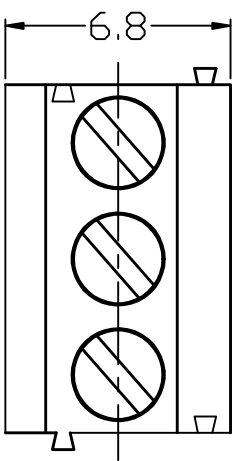


REV	DESCRIPTION	DRAWN	CHECKED	APPROVED



Material
 Screws: M2,5 Steel Zinc Plated
 Wire guard: phosphor bronze Ni plated
 or stainless steel
 Pin Header: Brass, Tin Plated
 Housing: PA66, UL94V-0

Electrical
 Rated Voltage: 300V
 Rated Current: 7A
 Contact Resistance: 20mOhm
 Insulation Resistance: 5000MOhm/1000V
 Withstanding Voltage: AC 1500V/1Min
 Wire Range: 24 - 18AWG

Mechanical
 Temp. Range: -40C - +105C
 Max. Soldering: +250C for 5sec
 Torque: 0,2Nm
 Strip Length: 4,5 - 5mm

GENERAL TOLERANCE		ANGLE TOLERANCE		PROJECTION	TITLE
X.	±0,25	X.	±5°	mm	EURO TERMINAL BLOCKS
.X	±0,15	.X	±3°	A4	PITCH:3,50MM
.XX	±0,10	.XX	±2°		KF350V SERIES

DRAWING TYPE	SCALE	SHEET	1 OF 1
DRAWING NO.	1:1		

KALTRONIC ELECTRONIC
DFP
慈溪市凯峰电子有限公司
 KAIFENG ELECTRONIC CO.,LTD